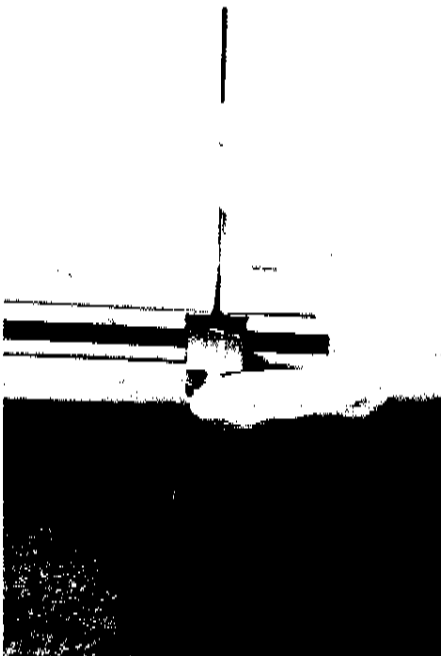
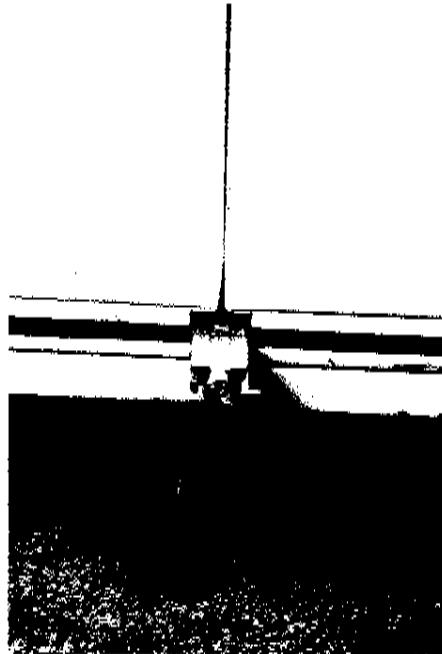
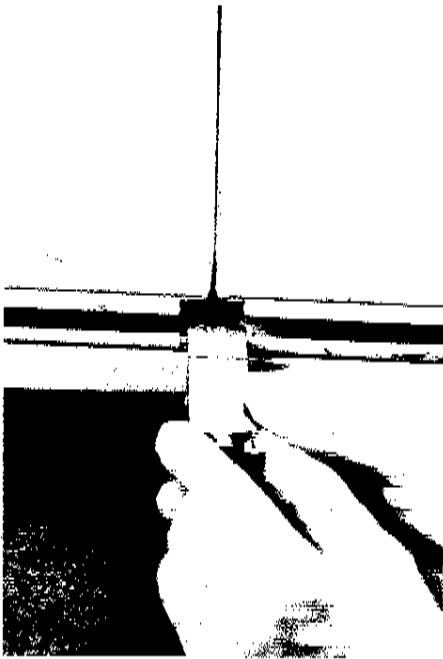


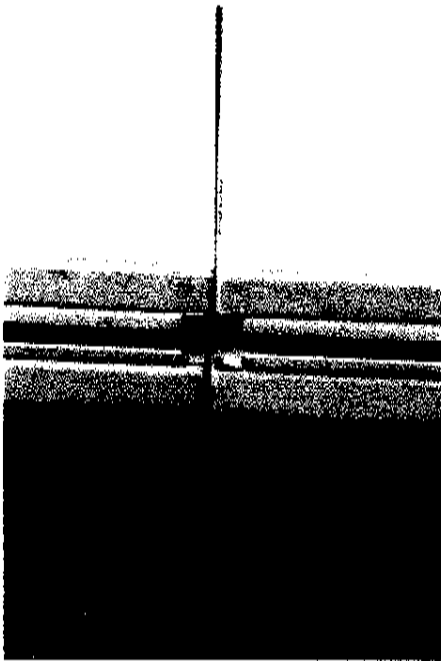


PZ 720A Dance Floor

DANCE FLOOR CONNECTING INSTRUCTIONS

1. Put two dance floors side by side. Take the Dance floor connector (Part# SCA-5) and loosen the allen wrench thumb screw, turn it sideways and start sliding between the two dance floors. If it is difficult to slide in, loosen the thumb screw a little more.

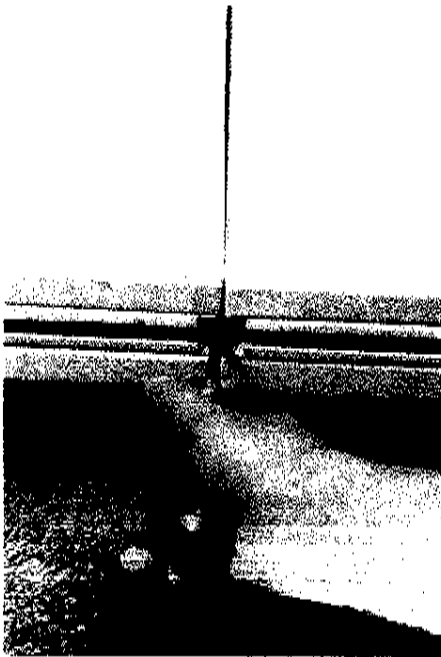




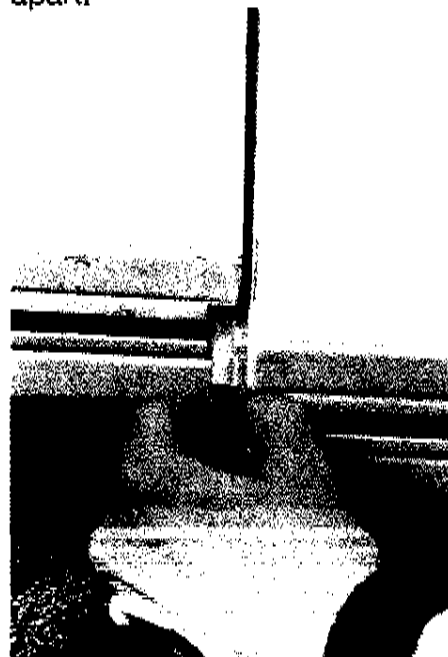
2. Slide the connector until the metal tab stops it from going any further.



4. To remove the connector, loosen the allen screw and slide the two dance floors apart.



3. Once the connector is pushed all the way in, use a 5mm allen wrench to tighted the connector.



5. With the two dance floors seperated reach in and grab the connector and slide it out.